



BOXES AND BOARDS

Versatility and modularity of solutions and materials

STANDARD



HEAVY DUTY





STANDARD

PRIMA topTER
empty distribution
boards

Page 120



topTER - TAIS
pre-wired and certified
combination units

Page 127



TAIS CUBE
automation
and distribution
boards

Page 128



PH
junction
boxes
with knockouts

Page 136



UNIBOX
universal
boxes

Page 138



HEAVY DUTY

TAIS
modular
boxes

Page 140



TAIS GRANDE
modular
boxes
in thermosetting (GRP)

Page 144



ALUPRES
modular boxes
in aluminium alloy

Page 148



CONTACT
terminal blocks
in ceramic

Page 154



UNI
cable glands
in insulating material
and nickel-plated brass

Page 156





PRIMA and topTER are a series of watertight moulded distribution boards with transparent window or blind door with high capacity and which can contain industrial and domestic sockets from 16A up to 63A, with protection rating IP44 and IP66/IP67. Thanks to the dedicated caps, you can integrate domestic sockets in the boards together with industrial and interlocked ones. The highly engineered design, the high quality standard and all the components makes this series particularly suitable for installation in advanced service sector and industry where the intense rhythm of the activities does not allow any accidental stopages.

COMFORTABLE

Thanks to the hinges, the wiring and maintenance are easier



VERSATILITY

Thanks to flanges and caps



TAMPER PROOF

Thanks to the padlockable window





page 28



page 28



page 64



page 73



page 78



page 64



page 73



page 78



63A page 26



16A - 32A page 63



16A - 32A page 71



63A page 77
16A - 32A page 78



page 27



page 26



page 27



page 27



page 63



page 26



page 27



page 72



page 26



page 27



page 72



page 27



page 27



page 79



page 26



page 26



page 79



page 26



page 27

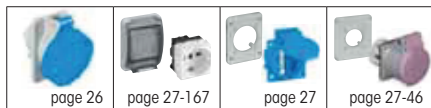


Distribution boards with transparent window for wall mounting topTER devices IP66

	Shape	N. total sockets	Max with 65x83 flange	Max with 88x100 flange	Max with 100x100 flange	Power dissipation (W)	Palazzoli code	Pack Q.ty
5 modules		2	2	1		22	579822	1
5 modules		3	3	1		22	579823	1
10 modules		4	4	4		40	579824	1
16 modules		6	6	6		56	579826	1
22 modules		8	8	8		70	579828	1
10 modules		3	2	1	1	40	579863	1
16 modules		5	4	2	1	56	579865	1

Characteristics: padlockable modular window.

Technical accessories:

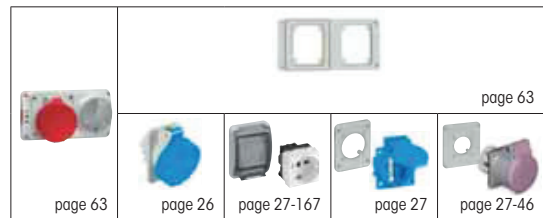


Distribution boards for wall mounting of PRIMA devices IP55

	Shape	N. installable sockets	Power dissipation (W)	External dimensions (mm)	Palazzoli code	Pack Q.ty
9 modules		2	36	212x414	579620	1
blind		2	36	212x414	579621	1
9+9 modules		2	50	424x280	579602	1
9+9 modules		4	70	424x410	579640	1
9 modules		4	70	424x410	579641	1
blind		4	70	424x410	579642	1

Characteristics: padlockable modular window.

Technical accessories:





Distribution boards with transparent window for topTER 16A and 32A switched sockets IP66

	Shape	N. installable sockets	Power dissipation (W)	External dimensions (mm)	Palazzoli code	Pack Q.ty
5 modules		1	22	122x395	579741	1
10 modules		2	40	239x456	579742	1
16 modules		3	56	350x456	579743	1
22 modules		4	70	461x456	579744	1

Characteristics: padlockable modular window.



Distribution boards with blind cover for topTER 16A and 32A switched sockets IP66

	Shape	N. installable sockets	Power dissipation (W)	External dimensions (mm)	Palazzoli code	Pack Q.ty
		1	22	122x395	579721	1
		2	40	250x395	579722	1
		3	56	380x395	579723	1

Technical accessories:

page 71	page 26	page 27-167	page 27	page 27-46	page 27	page 26



Distribution boards with blind cover for topTER 63A switched sockets IP55

N. installable sockets	Power dissipation (W)	Dimensions (mm)	Protection rating	Palazzoli code	Pack Q.ty
1	22	122x452	IP65	579421	1
2	40	250x452	IP55	579422	1
3	56	380x452	IP55	579423	1



Distribution boards with transparent window for topTER 63A switched sockets IP55

N. installable sockets	N. EN 50022 modules	Power dissipation (W)	External dimensions (mm)	Protection rating	Palazzoli code	Pack Q.ty
1	5	22	122x452	IP65	579631	1
2	12	40	250x452	IP55	579622	1
3	18	56	380x452	IP55	579623	1

Characteristics: padlockable modular window.

Technical accessories:

page 77	page 78						
		page 26	page 27-167	page 27	page 27-46	page 37	page 40

EASY COMPOSER

Software for easy combining of customized units.



1. Select the socket type	2. Compose your board	3. Download the certificates

It is available on www.palazzoli.com





Modular covers

N. EN 50022 modules	For boards with code	Palazzoli code	Pack Q.ty
2	all topTER, PRIMA, ULYSSE and TAIS boards	579904	20

Uses: allows the unused modules to be covered, they ensure the IP40 protection rating.



Coupling fitting with Pg threading for topTER distribution boards IP66

Pg	Mounting holes (mm)	For cables Ø (mm)	Palazzoli code	Pack Q.ty
21	29	17	580250	1



Transportation handles

For boards with code	Palazzoli code	Pack Q.ty
all the topTER boards	579011	1



Pair of stainless steel plates for wall mounting of topTER distribution boards

For boards with code	Palazzoli code	Pack Q.ty
all the topTER boards	579012	10



Universal support for topTER distribution boards

For boards with code	Palazzoli code	Pack Q.ty
all the topTER boards	570010	1



Finishing frames for flush mounting of PRIMA distribution boards

For boards with code	Palazzoli code	Pack Q.ty
579620 and 579621	579582	1
579640, 579641 and 579642	579584	1



Equipotential bars for earth connection

N. holes	Connection type	Palazzoli code	Pack Q.ty
4	M5 screws for wire end up to 25mmq	579013	1
10	M5 screws for wire end up to 25mmq	579014	1

Equipment included: connection screws and fixing supports.
Characteristics: suitable for topTER distribution boards with 239x456 and larger dimensions.



Conformity to standards	IEC/EN 61439-1 IEC/EN 61439-2
Material	Thermosetting (GRP) Technopolymer
Protection rating (IP as per IEC/EN 60529)	IP67 (thermosetting) IP66 (technopolymer)
Colour	RAL 5015 (thermosetting) RAL 7035 (technopolymer)
Resistance to abnormal heat and fire ("Glow Wire" as per IEC/EN 60695-2-10)	960°C (thermosetting) 960°C (topTER switch) 850°C (topTER contact holder insert) 650°C (topTER body)
Self-extinguishing grade (as per UL94)	V0 (thermosetting) HB (technopolymer)
Resistance to impacts (IK rating as per IEC/EN 62262)	IK10 (thermosetting) IK08 (technopolymer)
Rated current	16A - 32A
Rated voltage	230V - 400V
Rated frequency	50-60Hz
Insulation class	II □
Storage temperature	-50°C - +80°C (thermosetting) -30°C - +70°C (technopolymer)
Operating temperature	-25°C - +50°C



Combination units
pre-wired, **2 fused sockets**
and **RCD protection**
50-60Hz **IP67**

16A interlocked sockets		RCD	Palazzoli code	Pack Q.ty
2P+≙ 230V	3P+≙ 400V			
2		40A 2P 30mA	500461	1
1	1	40A 4P 30mA	500462	1
	2	40A 4P 30mA	500463	1

Equipment included: sockets complete with fuses.
Characteristics: padlockable modular window.



Combination units
pre-wired, **2 fused sockets**
and **4x16mm² terminal block**
50-60Hz **IP67**

16A interlocked sockets		Palazzoli code	Pack Q.ty
2P+≙ 230V	3P+≙ 400V		
2		500411	1
1	1	500412	1
	2	500413	1

Equipment included: sockets complete with fuses.



Combination units
pre-wired, with **3 interlocked sockets** and **MCB protection**
50-60Hz **IP66**

Interlocked sockets 2P+≐ 230V	3P+≐ 400V	MCB	Palazzoli code	Pack Q.ty
3		1x2P / 16A	678120	1
2	1	1x2P / 16A, 1x3P / 16A	678121	1

Characteristics: the modular door can be padlocked. Suitable for temporary fixing.



Combination units
pre-wired, with **2 sockets** and **MCB protection**
50-60Hz **IP66**

Industrial sockets 2P+≐ 230V	3P+≐ 400V	Domestic socket 2P+≐ 250V P30/P17	MCB	Palazzoli code	Pack Q.ty
1	1		1x4P / 16A	678020	1
1		1	1x2P / 16A	678021	1
	1	1	1x4P / 16A	678022	1

Characteristics: the modular door can be padlocked. Suitable for temporary fixing. The codes 678021 and 678022 have IP55 protection rating.

Technical accessories:



Combination units
pre-wired, with **4 sockets** and **MCB protection**
50-60Hz **IP66**

Industrial sockets 2P+≐ 230V	3P+≐ 400V	Domestic socket 2P+≐ 250V P30/P17	MCB	Palazzoli code	Pack Q.ty
4			2x2P / 16A	678040	1
3	1		2x2P / 16A 1x3P / 16A	678041	1
2	2		2x2P / 16A 1x3P / 16A	678042	1
2	1	1	2x2P / 16A 1x3P / 16A	678047	1
2		2	3x2P / 16A	678049	1

Characteristics: the modular door can be padlocked. Suitable for temporary fixing. The 678047 and 678049 codes have IP55 protection rating.



Combination units
pre-wired, with **6 sockets** and **MCB protection**
50-60Hz **IP66**

Industrial sockets 2P+≐ 230V	3P+≐ 400V	3P+N+≐ 400V	Domestic socket 2P+≐ 250V P30/P17	MCB	Palazzoli code	Pack Q.ty
4	2			2x2P / 16A, 1x3P / 16A	678060	1
3	3			1x2P / 16A, 1x3P / 16A	678061	1
3	2	1x32A		1x2P / 16A, 1x3P / 16A 1x4P / 32A	678062	1
2	2	1x32A	1	2x2P / 16A, 2x3P / 16A 2x4P / 32A	678063	1
2	1	1	2	3x2P / 16A, 1x4P / 16A	678069	1

Characteristics: the modular door can be padlocked. Suitable for temporary fixing. The 678063 and 678069 codes have IP55 protection rating.

Technical accessories:





Suitable for thermal power plants, cement plants, mineral oil extraction plants, nuclear plants and laboratories, commercial and exhibition activities, airports, railway and underground facilities.



Resistant to everything thanks to the Palazzoli thermosetting material

GOOD DESIGN
INTERNATIONAL AWARD

BOXES AND
BOARDS

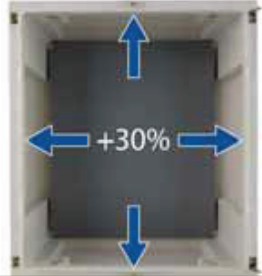
THE ADVANTAGES



TAIS Cube has a very high protection rating, IP66. This characteristic, certified with a laboratory test, guarantees the product against strong water jets.



The steel frame allows to easily mount modular devices and trunking, and to comfortably wire everything on the bench, out of the board. The wired frame can then be easily inserted inside. The material of which it is made guarantees robustness and durability over time.



The board special design makes this series of products very wide and spacious. Consequently the back plate and door, either blind or transparent, offer 15% of extra space available if compared with similar sizes of the major competitors.



The door hinges, made of steel and nicked brass, are located far from the edges to avoid eventual breakings in case of falls or impacts.



Size	N. vertical modules	N. EN 50022 modules	External dimensions	Internal usable dimensions	Distribution board with blind door	Distribution board with transparent door
1	-	-	260x305x160	200x250x100	550001	550031
2	3	36 (3X12)	340x430x180	280x375x120	550002	550032
3	3	54 (3X18)	450x505x220	390x450x160	550003	550033
4	4	72 (4X18)	450x655x220	390x600x160	550004	550034
5	4	96 (4X24)	560x655x260	500x600x200	550005	550035
6	5	140 (5X28)	630x810x300	570x750x235	550006	550036
7	5	200 (5X40)	850x1060x350	790x1000x290	550007	550037

TAIS CUBE SERIES

Website dedicated to distribution and automation boards of the TAIS CUBE series



www.palazzoli.com





AUTOMATION			DISTRIBUTION				
Back plates in steel	Back plates in thermosetting (GRP)	Inner door in thermosetting (GRP)	Functional frame	Windowed panel	Blind panel	Blind double panel	EN 50022 rail
550601	550621	-	-	-	-	-	-
550602	550622	550502	550562	550522	550542	550552	550582
550603	550623	550503	550563	550523	550543	550553	550583
550604	550624	550504	550564				
550605	550625	550505	550565	550525	550545	550555	550585
550606	550626	550506	550566	550526	550546	550556	550586
550607	-	550507	550567	550527	550547	550557	550587

COMMON ACCESSORIES					
Set of 4 brackets		Security lock	Handle	Support for pole mounting	
Zincd steel	Stainless steel			For sizes 1-2	For sizes 3-4-5
550640	550641	550680	579011	550642	550643



TAIS Cube series distribution and automation boards are a range of products in thermosetting (GRP) for heavy duty uses with IP66 protection rating and resistant to UV rays. The system is composed of 7 sizes in the versions with blind or transparent door.

The accessories to use the board in typical configurations of automation are the back plate in steel sheet or in thermosetting (GRP) and the inner door in thermosetting (GRP), equipped with opening handles and that can be installed at two different positions and fixed on both sides.

In the configuration for distribution, blind or windowed moulded panels and EN 50022 rails that can be regulated at different heights are mounted on a frame made of steel sheet that can be wired on the bench, out of the board, and then inserted once the work is done.

The door is fixed to the back box with elements in nicked brass and stainless steel located far from the edges and that allows an opening wider than 180°.

Conformity to standards	IEC/EN 62208
Material	Thermosetting (GRP)
Protection rating (IP as per IEC/EN 60529)	IP66
Colour	RAL7035
Resistance to abnormal heat and fire ("Glow Wire" as per IEC/EN 60695-2-10)	960°C
Self-extinguishing grade (as per UL94)	V0
Resistance to impacts (IK rating as per IEC/EN 62262)	IK10
Rated frequency	0 - 1000 Hz
Rated voltage AC	AC 1000 Vac
Rated voltage DC	DC 1500 Vcc
Rated impulse seal voltage	8kV
Maximum short-circuit current	Icc 35kA
Insulation class	II
Operating temperature	-30°C - +100°C



Resistance to chemical agents

WATER	SALINE ATMOSPHERES	ACIDS		CHEMICAL BASES		SOLVENTS			
		CONCENTRATED	DILUTED	CONCENTRATED	DILUTED	ALCOHOL	ACETONE	PERCHLOROETHYLENE	BENZENE
OILS		FATS		AMMONIA	OXIDIZERS	INORGANIC SALTS	GASOLINE	DETERGENTS	U.V. RAYS
MINERAL	VEGETABLE	ANIMAL	SYNTETIC						

Legend: high resistance partial resistance



Distribution boards in thermosetting (GRP) with blind door IP66

Size	External dimensions (mm)	Internal usable dimensions (mm)	Power dissipation allowed when empty (W)	Palazzoli code	Pack Q.ty
1	260x305x160	200x250x100	53	550001	1
2	340x430x180	280x375x120	90	550002	1
3	450x505x220	390x450x160	138	550003	1
4	450x655x220	390x600x160	174	550004	1
5	560x655x260	500x600x200	217	550005	1
6	630x810x300	570x750x235	302	550006	1
7	850x1060x350	790x1000x290	506	550007	1

Equipment included: key with triangular insert, screwcaps for double insulation.
Note: the completed installation in conditions of extremely variable climate may require the use of anti-condensation devices.



Distribution boards in thermosetting (GRP) with transparent door IP66

Size	External dimensions (mm)	N. EN 50022 modules	Power dissipation allowed when empty (W)	Palazzoli code	Pack Q.ty
1	260x305x160	-	53	550031	1
2	340x430x180	36 (3x12)	90	550032	1
3	450x505x220	54 (3x18)	138	550033	1
4	450x655x220	72 (4x18)	174	550034	1
5	560x655x260	96 (4x24)	217	550035	1
6	630x810x300	140 (5x28)	302	550036	1
7	850x1060x350	200 (5x40)	506	550037	1

Equipment included: key with triangular insert, screwcaps for double insulation.
Note: the completed installation in conditions of extremely variable climate may require the use of anti-condensation devices.



Back plates in steel

Size	Dimensions (mm)	Palazzoli code	Pack Q.ty
1	180x240	550601	5
2	260x370	550602	5
3	370x445	550603	5
4	370x595	550604	5
5	475x595	550605	1
6	550x745	550606	1
7	765x995	550607	1

Equipment included: complete with screws for mounting.



Back plates in thermosetting (GRP)

Size	Dimensions (mm)	Palazzoli code	Pack Q.ty
1	180x240	550621	5
2	260x370	550622	5
3	370x445	550623	5
4	370x595	550624	5
5	475x595	550625	1
6	550x745	550626	1

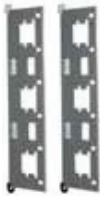
Equipment included: complete with screws for mounting.



Inner doors in thermosetting (GRP)

Size	Dimensions (mm)	Palazzoli code	Pack Q.ty
2	280x375	550502	4
3	388x450	550503	4
4	388x600	550504	4
5	496x600	550505	1
6	568x750	550506	1
7	784x1000	550507	1

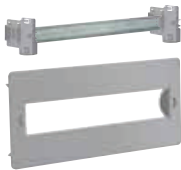
Characteristics: the inner door is reversible and easy to open through the handles. It can be used as back plate.



Functional frames
in steel, for the installation of
front panels and EN 50022
rails

Size	N. installable panels	Palazzoli code	Pack Q.ty
2	3	550562	6
3	3	550563	6
4	4	550564	4
5	4	550565	2
6	5	550566	2
7	5	550567	1

Equipment included: complete with screws for mounting.
Characteristics: it allows the wiring of the modular panels outside of the board and the installation of EN 50022 at different heights.



Front windowed panels
with EN 50022 rail
for modular devices

Size	Height (mm)	N. EN 50022 modules	Palazzoli code	Pack Q.ty
2	125	12	550522	6
3-4	150	18	550523	6
5	150	24	550525	4
6	150	28	550526	4
7	200	40	550527	1

Equipment included: modular covers.
Characteristics: directly mounting on the frames.



Front blind panels
at single height

Size	Height (mm)	Palazzoli code	Pack Q.ty
2	125	550542	6
3-4	150	550543	6
5	150	550545	4
6	150	550546	4
7	200	550547	1

Characteristics: directly mounting on the frames.



Front blind panels
at double height

Size	Height (mm)	Palazzoli code	Pack Q.ty
2	250	550552	4
3-4	300	550553	4
5	300	550555	1
6	300	550556	1
7	400	550557	1

Characteristics: directly mounting on the frames.



EN 50022 rails
reinforced, for frames

Size	N. EN 50022 modules	Palazzoli code	Pack Q.ty
2	12	550582	6
3-4	18	550583	6
5	24	550585	2
6	28	550586	2
7	40	550587	1

Equipment included: directly mounting on the frames.



Set of **brackets**
for wall mounting

N. brackets	Material	Palazzoli code	Pack Q.ty
4	Zinc steel	550640	20
4	Stainless steel	550641	5

Characteristics: they can be mounted horizontally, vertically or hidden, retaining the double insulation.



Pair of **accessories**
for pole mounting

Size	Material	Palazzoli code	Pack Q.ty
1-2	Steel	550642	1
3-4-5	Steel	550643	1



Security lock
with handle

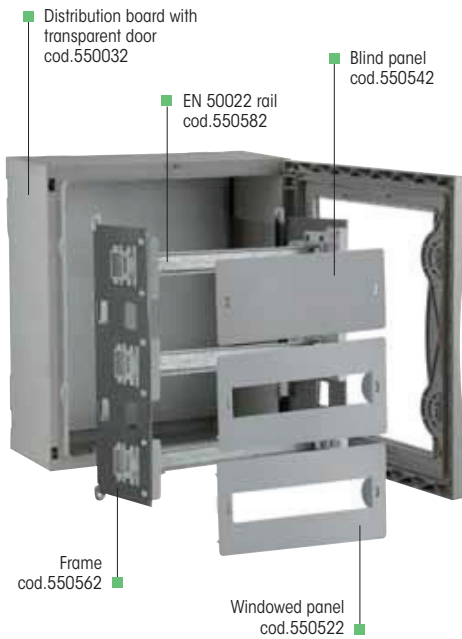
N. keys	Material	Palazzoli code	Pack Q.ty
2	Steel	550680	10

Characteristics: closing with Yale code key.



Transportation
handles

For boards with code	Palazzoli code	Pack Q.ty
all TAIS CUBE boards	579011	1





The moulded boxes of the PH series, in collaboration between Palazzoli and Hensel, allows the installer to realize connections in a plastic enclosure with high quality and performance characteristics. The series has been designed to offer a simple and rational product, with details to simplify and speed up the installer work. PH junction boxes are recommended in offices, commercial centres and light industry.

EASY WIRING
Thanks to "Clip"
on feature at the base

LONG-LASTING WATERTIGHT
Thanks to the integrated
internal gasket

EASY FIXING
Thanks to the
knock-outs



PH series

Junction boxes with knockouts

Thermoplastic
standard uses

Conformity to standards	IEC/EN 60670-1
Material	Technopolymer
Protection rating (IP as per IEC/EN 60529)	IP65
Colour	RAL7035
Resistance to abnormal heat and fire ("Glow Wire" as per IEC/EN 60695-2-10)	750°C
Self-extinguishing grade (as per UL94)	V2
Resistance to impacts (IK rating as per IEC/EN 62262)	IK08
Insulation class	II □
Operating temperature	-40°C - +70°C



Junction **boxes**
moulded, with knockouts
IP65

External dimensions (mm)	Internal dimensions (mm)	N. entry	Palazzoli code	Pack Q.ty
88x88x53	63x70	7xM20	791910	5
98x98x58	73x78	7xM25	791920	5
139x119x70	128x86	6xM25/M32, 4xM25	791930	5
167x125x82	136x112	10xM25/M32	791940	5
200x160x98	168x145	10xM32/M40	791950	2
310x210x116	278x185	12xM25/M32, 4xM40/M50	791960	1

Equipment included: screwcaps for double insulation, code 791910: 4 x stepped glands M20; code 791920: 4 x stepped glands M25; code 791930: 3 x stepped glands M32; code 791940: 3 x stepped glands M32; code 791950: 3 x stepped glands M40.



Terminal **blocks**
with easy clipping
for PH boxes

Rated voltage (V)	N. poles for section	For boxes with code	Palazzoli code	Pack Q.ty
500	5x4 mm ²	791910, 791920, 791930	791911	25
500	5x6 mm ²	791930, 791940, 791950, 791960	791931	15
500	5x10 mm ²	791940, 791950, 791960	791941	1
500	5x25 mm ²	791950, 791960	791951	2
500	4x50 mm ²	791960	791961	1
500	5x50 mm ²	791960	791971	1



Additional **stepped glands**
for PH boxes
IP55

Mounting hole type	For cables ø (mm)	Palazzoli code	Pack Q.ty
Pg 13,5	9 ÷ 13,5	791915	100
Pg 16	9 ÷ 16	791925	20
Pg 21	9 ÷ 21	791935	50
Pg 29	17 ÷ 29	791945	30
M20	9 ÷ 13,5	791916	20
M25	9 ÷ 16	791926	20
M32	9 ÷ 21	791936	10
M40	17 ÷ 29	791946	5

Characteristics: snaplock fastening. PG type rated IP54.

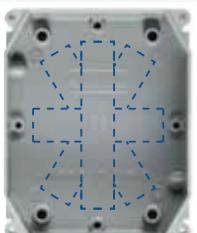


UNiversal BOXes in aluminium alloy are suitable for environments with aggressive atmosphere present. Back box and cover are treated with ecological anticorrosion passivation with fluoro-zirconium and finished with hot polymerized scratch-resistant non-toxic polyester painting. They are supplied with blind door and with a watertight cover that guarantees the IP66/IP67 double protection rating thanks to the integrated gasket.

EASY TO BE INSTALLED
Can be fixed by keeping the screwdriver perpendicular to the screw



MULTIFUNCTION
Thanks to the complete set of supports



IP66 and IP67
Thanks to the external earth connection feature





Conformity to standards	IEC/EN 60670-1
Material	Aluminium alloy
Surface treatment	Passivation with fluoro-zirconium
Painting	Hot polymerized non-toxic polyester
Protection rating (IP as per IEC/EN 60529)	IP66/IP67
Colour	RAL7042 light hammer finish
Resistance to impacts (IK rating as per IEC/EN 62262)	IK08
Insulation class	I
Storage temperature	-40°C - +100°C
Operating temperature	-40°C - +100°C



Junction boxes
in aluminium alloy
IP66/IP67

Description	Dimensions (mm)		Palazzoli code	Pack Q.ty
	external	internal		
UNI B9	100x100x59	88x88x44	520009	12
UNI B11	140x115x60	128x103x46	520011	12
UNI B12	166x141x64	153x128x49	520012	6
UNI B14	192x168x80	176x152x65	520014	6
UNI B19	253x217x93	236x201x75	520019	1
UNI B20	314x264x122	292x243x104	520020	1
UNI B21	410x315x150	386x291x126	520021	1

Equipment included: 2 kits for making earth connections.

Characteristics: boxes suited for EN 50022 rail mounting horizontally or vertically using M4x6 self-tapping screws. EN 50022 rail from Palazzoli is to be mounted diagonally.

Technical accessories:



page 157



Back plates
in zinc steel
for UNIBOX boxes

Description	Dimensions (mm)	Palazzoli code	Pack Q.ty
UNI B11	119x78	522011	1
UNI B12	132x108	522012	1
UNI B14	165x125	522014	1
UNI B19	200x165	522019	1
UNI B20	250x210	522020	1
UNI B21	345x257	522021	1

Equipment included: screws for mounting inside the box, 2 kits for making earth connections.



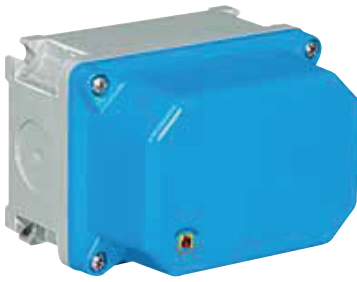
EN 50022 rails
for UNIBOX boxes

Description	Working length (mm)	Palazzoli code	Pack Q.ty
UNI B9	60	521009	1
UNI B11	95	521011	1
UNI B12	125	521012	1
UNI B14	170	521014	1
UNI B19	230	521019	1
UNI B20	290	521020	1
UNI B21	380	521021	1

Equipment included: screws for mounting inside the box.



Suitable for chemical industries, industrial facilities, plants with galvanic treatments, airports, cold rooms and in dusty, salty and corrosive atmosphere.

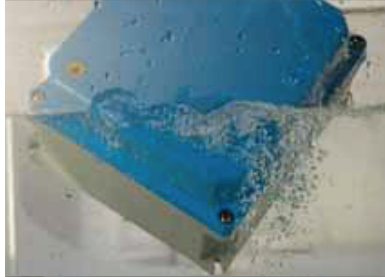


Excellent resistance to stressing, vibrations, abrasions and does not need any maintenance

THE ADVANTAGES



All the products of the TAIS series are made of thermosetting (GRP), the material by Palazzoli that does not propagate the flame, does not emit toxic gases and resistant to chemical agents.



The special gaskets in non-ageing elastomer guarantee a protection rating up to IP68, for installing in areas subject to possible flooding.



The back boxes are equipped with brass threaded inserts that ensure an easy opening and closing of the cover even after long time.



Practically immune to the major part of all the aggressive substances they are the best solution for industrial installations under 1.5 Mtrs height.



TAIS boxes represent the state of the art for industrial electrical junctions, both for wall mounting or on machinery boards in insulating material. The offer is structured on two types of boxes, one is with small dimensions for mounting on board of machineries and the other is with medium and big dimensions to be wall mounted for industrial plants.

Conformity to standards	IEC/EN 60670-1
Material	Thermosetting (GRP)
Protection rating (IP as per IEC/EN 60529)	IP67 - IP68
Colour	RAL5015 (cover) RAL7042 (base)
Resistance to abnormal heat and fire ("Glow Wire" as per IEC/EN 60695-2-10)	960°C
Self-extinguishing grade (as per UL94)	V0
Resistance to impacts (IK rating as per IEC/EN 62262)	IK10
Insulation class	II □
Storage temperature	-50°C - +80°C
Operating temperature	-40°C - +70°C



Junction **boxes** in thermosetting (GRP) with **low cover** **IP67**

External dimensions (mm)	Box height (mm)	Cover height (mm)	Palazzoli code	Pack Q.ty
92x92	50	18	532035	5
125x92	50	18	532045	1
185x92	50	18	532055	1
125x125	75	25	532116	1
185x125	75	25	532117	1
250x125	75	25	532118	1

Characteristics: blind walls.



Junction **boxes** in thermosetting (GRP) with **high cover** **IP67**

External dimensions (mm)	Box height (mm)	Cover height (mm)	Palazzoli code	Pack Q.ty
92x92	50	50	532005	1
125x92	50	50	532006	1
185x92	50	50	532015	1
125x125	75	50	532016	1
185x125	75	50	532017	1
250x125	75	50	532018	1

Characteristics: blind walls.

Technical accessories:





Junction **boxes**
in thermosetting (GRP)
with **low cover**
IP68

External dimensions (mm)	Box height (mm)	Cover height (mm)	Palazzoli code	Pack Q.ty
92x92	50	18	538035	1
125x92	50	18	538045	1
185x92	50	18	538055	1
125x125	75	25	538116	1
185x125	75	25	538117	1
250x125	75	25	538118	1

Characteristics: IP68 protection rating test is carried out at 4 Mtrs depth for 24 h. Blind walls.



Junction **boxes**
in thermosetting (GRP)
with **high cover**
IP68

External dimensions (mm)	Box height (mm)	Cover height (mm)	Palazzoli code	Pack Q.ty
92x92	50	50	538005	1
125x92	50	50	538006	1
185x92	50	50	538015	1
125x125	75	50	538016	1
185x125	75	50	538017	1
250x125	75	50	538018	1

Characteristics: IP68 protection rating test is carried out at 4 Mtrs depth for 24 h. Blind walls.

Technical accessories:



page 157

page 155

page 102



Back plates
in galvanized steel
for TAIS boxes

For boxes with dimensions (mm)	For boxes with code	Palazzoli code	Pack Q.ty
92x92	532005, 532035, 532225, 538005 538035, 532005, 532035	532705	1
125x92	532006, 532045, 532285, 532295 538006, 538045, 532006, 532045	532714	1
185x92	532015, 532055, 532325, 532385, 538015, 538055, 532015, 532055	532715	1
125x125	532016, 532116, 532346, 538016 538116, 532016EX, 532116EX	532716	1
185x125	532017, 532117, 532667, 532677, 538017 538117, 532017EX, 532117EX, 532667EX	532717	1
250x125	532018, 532118, 532618, 532628 532638, 532648, 538018, 538118 532018EX, 532118EX, 532628EX	532718	1

Uses: for fixing terminal or modular devices.



Junction **boxes**
in thermosetting (GRP)
with **transparent window**
IP67

External dimensions (mm)	N. EN 50022 modules	Power dissipation (W)	Palazzoli code	Pack Q.ty
125x125x125	4	13	532516	1
185x125x125	6,5	15	532557	1
250x125x125	9	20	532658	1

Characteristics: blind walls with drilling template. Padlockable window and with tamper-proof screw.

Technical accessories:



page 157

page 102



TAIS Grande series distribution boxes are a range of products with thickened walls made of thermosetting (GRP) for heavy duty uses with IP67 protection rating and resistant to UV rays.

The system is composed of 5 sizes, complete with back plate made of zinc-tropicalized steel sheet, that can be accessorized with blind or transparent cover with moulded large captive screws with hexagonal insert of 8 mm.

The boxes are available in versions totally blind or with windows on the sides that allows for modular combinations.

Conformity to standards	IEC/EN 60670-1
Material	Thermosetting (GRP)
Protection rating (IP as per IEC/EN 60529)	IP65 and IP67
Colour	RAL5015 (cover) RAL7042 (base)
Resistance to abnormal heat and fire ("Glow Wire" as per IEC/EN 60695-2-10)	960°C
Self-extinguishing grade (as per UL94)	V0
Resistance to impacts (IK rating as per IEC/EN 62262)	IK10
Insulation class	II □
Storage temperature	-50°C - +80°C
Operating temperature	-40°C - +70°C



Resistance to chemical agents

WATER	SALINE ATMOSPHERES	ACIDS		CHEMICAL BASES		SOLVENTS			
		CONCENTRATED	DILUTED	CONCENTRATED	DILUTED	ALCOHOL	ACETONE	PERCHLOROETHYLENE	BENZENE
↑	↑	→	↑	↑	↑	↑	↑	↑	↑
OILS		FATS		AMMONIA	OXIDIZERS	INORGANIC SALTS	GASOLINE	DETERGENTS	U.V. RAYS
MINERAL	VEGETABLE	ANIMAL	SYNTETHIC						
↑	↑	↑	↑	↑	↑	↑	↑	↑	↑

Legend: ↑ high resistance → partial resistance



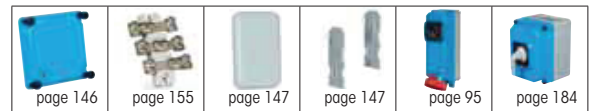
Junction **boxes**
in thermosetting (GRP)
with back plate
IP67

External dimensions (mm)	Window type	Installable TAIS socket module	Palazzoli code	Pack Q.ty
185x185x115		2x95	531011	1
		2x95	531200	1
		2x95	531211	1
		2x95	531311	1
		-	531411	1
	250x185x115		2x95/2x125	531021
		2x95/2x125	531220	1
		2x95	531222	1
		2x95/2x125	531221	1
		-	531231	1
		2x95	531321	1
		2x95/2x125	531331	1
		-	531431	1

External dimensions (mm)	Window type	Installable TAIS socket module	Palazzoli code	Pack Q.ty	
250x250x115		2x95/2x125	531040	1	
		2x95/2x125	531241	1	
		-	531240	1	
		2x95/2x125	531340	1	
		-	531440	1	
		2x95/2x125	531540	1	
		2x95/2x125	531640	1	
		-	531042	1	
	370x250x115		-	531242	1
			-	531442	1
		-	531062	1	
500x370x115		-	531262	1	
		-	531662	1	

Equipment included: free windows with gaskets in non-ageing elastomer. Screws and bolts for coupling or closing with flanges and mounting plate.
Characteristics: they are used for making junction or distribution boards. Boxes with dimensions 250 x 250 and larger are rated IP65.

Technical accessories:





Blind covers
low, in thermosetting (GRP)
for TAIS Grande Boxes
IP67

For boxes with dimensions (mm)	Cover height (mm)	Palazzoli code	Pack Q.ty
185x185	25	535320	1
250x185	25	535321	1
250x250	25	535322	1
370x250	25	535323	1
500x370	25	535324	1

Equipment included: complete with large captive screws and can be closed.
Characteristics: covers with dimensions 250x250 and larger are IP65.



Transparent covers
low, in polycarbonate
for TAIS Grande boxes
IP67

For boxes with dimensions (mm)	Cover height (mm)	Palazzoli code	Pack Q.ty
250x185	25	535126	1
250x250	25	535135	1
370x250	25	535137	1
500x370	25	535157	1

Equipment included: complete with large captive screws and can be closed.
Characteristics: in UV stabilised polycarbonate. Covers with dimensions 250x250 and larger are rated IP65.



Blind covers
high, in thermosetting (GRP)
for TAIS Grande Boxes
IP67

For boxes with dimensions (mm)	Cover height (mm)	Palazzoli code	Pack Q.ty
250x185	75	535325	1
250x250	75	535326	1
370x250	75	535327	1
500x370	75	535328	1

Equipment included: complete with large captive screws and can be closed.
Characteristics: the height of the cover allows to insert MCCB inside. Covers with dimensions 250 x 250 and larger are rated IP65.



Transparent covers
high, in polycarbonate
for TAIS Grande boxes
IP67

For boxes with dimensions (mm)	Cover height (mm)	Palazzoli code	Pack Q.ty
250x185	75	535131	1
250x250	75	535140	1
370x250	75	535142	1
500x370	75	535162	1

Equipment included: complete with large captive screws and can be closed.
Characteristics: in UV stabilised polycarbonate. Covers with dimensions 250x250 and larger are rated IP65.



Covers with transparent window
in polycarbonate
for TAIS Grande boxes
IP67

For boxes with dimensions (mm)	Cover height (mm)	N. EN 50022 modules	Palazzoli code	Pack Q.ty
185x185	80	7,5	535640	1
250x185	80	11	535643	1

Equipment included: large captive screws and can be closed, EN 50022 rail and small parts for fastening to plate.
Characteristics: the window can be padlocked or closed with tamper-proof screw.

NOTES



Fixing screws made of technopolymer reinforced with fiber for a better strength to fix the cover, with an anti-loosening system that keeps the component in its seat and safety thanks to the possibility to be sealed.



Blind flanges
flat, in thermosetting (GRP),
for windowed walls
IP67

Type	Window dimensions (mm)	Flange height (mm)	Palazzoli code	Pack Q.ty
a	110x60	15	538110	2
b	175x60	15	538210	2
c	295x60	15	538310	1

Uses: closing the cable entry windows. Holes can be made for cable glands. The increased height helps entry of large cables or pipes and facilitates easier wiring.

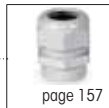


Blind flanges
raised, in thermosetting (GRP), for windowed walls
IP67

Type	Window dimensions (mm)	Flange height (mm)	Palazzoli code	Pack Q.ty
a	110x60	45	538130	2
b	175x60	45	538230	2
c	295x60	45	538330	1

Uses: closing the cable entry windows. Holes can be made for cable glands. The increased height helps entry of large cables or pipes and facilitates easier wiring.

Technical accessories:



page 157



Hinge frames
with installation kit
for TAIS Grande boxes

Description	Palazzoli code	Pack Q.ty
Single hinge in insulating material with screws, washers and gaskets	538385	1

Uses: with all TAIS series boxes in thermosetting (GRP) insulating material with screw cover (excluding those with 18 mm low cover). They cannot be fitted to walls with a window or near holes or knockouts.



Supports for bus bars
for TAIS Grande boxes

Installable on windows	Installable bars (mm)	Palazzoli code	Pack Q.ty
a	3 of 16x4 (16x5 - 20x4 - 20x5), 2 of 16x4 (earth and neutral), 3 of ø 9 (auxiliary circuits)	538180	1
b	3 of 25x5 (25x6 - 32x5 - 32x6), 2 of 16x4 (earth and neutral) 3 of ø 11 (auxiliary circuits)	538280	1
c	6 of 40x5 (40x8 - 50x5 - 50x8), 4 of 25x5 (25x6 - 32x5 - 32x6)	538380	1

Uses: they facilitate the application of conductive bus-bars in watertight distribution boards consisting of equipment in large TAIS insulating modular boxes with "a", "b" and "c" windows.



Supports for 90° angled wall
mounting of straight sockets
and plugs
IP65

Support base dimensions (mm)	Installable inlets/outlets	Box window	Palazzoli code	Pack Q.ty
142x113	63A	a	472967	1
142x113	125A	a	472968	1
207x113	63A	b	472977	1
207x113	125A	b	472978	1

Equipment included: 4 x stainless steel screws for fixing inlet or outlet.

Uses: for applications with composable modular boxes in thermosetting (with windows "a" or "b") or in aluminium (with windows F5).

Technical accessories:





ALUPRES series distribution boxes are a range of products with thick walls made of aluminium alloy for heavy duty uses with IP55 and IP67 protection rating and resistant to UV rays. The system is composed of different sizes treated with ecological anticorrosion passivation with fluoro-zirconium and finished with hot polymerized scratch-resistant non-toxic polyester painting. All the boxes are complete with back plate made of zinc-tropicalized steel sheet and can be accessorized with blind or windowed cover. The boxes are available in versions totally blind suitable to be drilled with threaded holes, or with window on the sides that allows for modular combinations or to be accessorized with blind or threaded flanges or junctions available in the range.

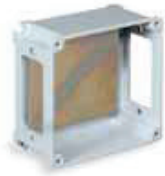
Conformity to standards	IEC/EN 60670-1
Material	Aluminium alloy
Surface treatment	Passivation with fluoro-zirconium
Painting	Hot polymerized non-toxic polyester
Protection rating (IP as per IEC/EN 60529)	IP55 - IP67
Colour	RAL5012 (cover) RAL7035 (base)
Resistance to impacts (IK rating as per IEC/EN 62262)	IK10
Insulation class	I
Storage temperature	-20°C - +90°C
Operating temperature	-20°C - +90°C



Resistance to chemical agents

WATER	SALINE ATMOSPHERES	ACIDS		CHEMICAL BASES		SOLVENTS			
		CONCENTRATED	DILUTED	CONCENTRATED	DILUTED	ALCOHOL	ACETONE	PERCHLOROETHYLENE	BENZENE
↑	↑	↓	→	→	↑	↑	↑	↑	↑
OILS		FATS		AMMONIA	OXIDIZERS	INORGANIC SALTS	GASOLINE	DETERGENTS	U.V. RAYS
MINERAL	VEGETABLE	ANIMAL	SYNTETIC						
↑	↑	↑	↑	↑	→	↑	↑	↑	↑

Legend: ↑ high resistance → partial resistance ↓ low resistance



Junction **boxes**
in aluminium alloy
with back plate
IP67

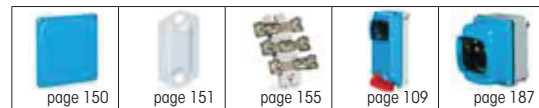
External dimensions (mm)	Window type	Palazzoli code	Pack Qty
92x92x42	blind walls	511110	1
	blind walls	511210	5
125x125x63	E1	511212	1
	F1	511214	1
	blind walls	511220	1
185x125x63	E1	511222	1
	F2	511224	1
252x125x63	E1	511232	1
	F2	511234	1
155x155x63	blind walls	521210	1
	F1	521214	1
	blind walls	511310	1
185x185x95	E3	511312	1
	F3	511314	1
	blind walls	511320	1
252x185x95	E3	511322	1
	F4	511324	1

External dimensions (mm)	Window type	Palazzoli code	Pack Qty
220x220x95	F3	521314	1
252x252x140	E5	511412	1
	F5	511414	1
	blind walls	511420	1
315x252x140	E5	511422	1
	F5	511424	1
507x252x140	E5	511452	1
295x295x105	F4	521414	1
315x315x140	Blind flange E5 Blind flange	511512	1
	F5	511514	1
373x373x140	Blind flange E6 Blind flange	511612	1
	F6	511614	1
507x373x140	E6	511632	1
	F6	511634	1
630x373x140	E6	511642	1
	E6	511822	1
630x507x140	F6	511824	1

Equipment included: complete with non-ageing gasket and captive stainless steel fixing screws.

Characteristics: covers with dimensions 155 x 155 and larger are rated IP55.

Technical accessories:





Blind covers
low, for ALUPRES boxes
IP67

For boxes with dimensions (mm)	Cover height (mm)	Palazzoli code	Pack Q.ty
92x92	23	515111	1
125x125	10	515200	1
185x125	25	515221	1
155x155	10	525200	1
185x185	10	515300	1
220x220	13	525300	1
252x252	25	515411	1
507x252	53	515453	1
295x295	18	525410	1
315x315	53	515512	1
373x373	25	515610	1
507x373	53	515632	1
630x373	53	515642	1
630x507	53	515822	1

Equipment included: complete with non-ageing gasket and captive stainless steel fixing screws.

Characteristics: covers with dimensions 155 x 155 and larger are rated IP55.



Blind covers
high, for ALUPRES boxes
IP67

For boxes with dimensions (mm)	Cover height (mm)	Palazzoli code	Pack Q.ty
92x92	35	515112	1
125x92	50	515124	1
185x92	50	515144	1
125x125	50	515214	1
185x125	50	515224	1
252x125	50	515234	1
185x185	50	515313	1
252x185	57	515323	1
252x252	57	515413	1
315x252	53	515423	1
373x373	80	515613	1
507x373	165	515637	1
630x373	127	515645	1

Equipment included: complete with non-ageing gasket and captive stainless steel fixing screws.

Characteristics: the height of the cover allows to insert MCCB inside. covers with dimensions 155 x 155 and larger are rated IP55.



Covers with transparent window and EN 50022 rail for ALUPRES boxes
IP67

For boxes with dimensions (mm)	Cover height (mm)	N. EN 50022 modules	Palazzoli code	Pack Q.ty
125x125	80	4	518204	1
185x125	80	6,5	518206	1
185x185	80	7,5	518207	1
252x125	80	9	518209	1
252x185	80	11	518211	1

Equipment included: complete with non-ageing gasket, captive stainless steel fixing screws and EN 50022 rail.

Characteristics: when fitted in the box they allow for the installation of modular devices.



Junction boxes
in aluminium alloy
with back plate
and blind cover
IP67

External dimensions (mm)	Window type	Palazzoli code	Pack Q.ty
92x92x66	blind walls	150006	1
92x92x66	window with earth screws	150001	1
125x125x73	blind walls	150016	1
125x125x73	window with earth screws	150011	1
155x155x73	blind walls	150026	1
155x155x73	window with earth screws	150021	1
185x185x105	window with earth screws	150031	1
220x220x107	window with earth screws	150041	1
295x295x121	window with earth screws	150051	1
373x373x165	window with earth screws	150061	1

Equipment included: windows free with gaskets in non-ageing elastomer and screws for fixing accessories or for coupling with another box. Internal and external earth screws.

Characteristics: boxes with dimensions 155x155 and larger are rated IP55

Technical accessories:





Blind covers
hinged, for ALUPRES boxes
IP55

For boxes with dimensions (mm)	Cover height (mm)	Palazzoli code	Pack Q.ty
185x185	64	516314	1
252x185	64	516324	1
252x252	64	516414	1
315x252	72	516424	1
507x252	72	516454	1
373x373	40	516611	1
373x373	72	516613	1
507x373	40	516631	1
507x373	140	516636	1
630x373	68	516643	1
630x507	68	516823	1
630x507	140	516826	1

Equipment included: complete with non-ageing gasket and captive stainless steel fixing screws.

Characteristics: the hinge makes it easier to reach the inside of the enclosure.



Blind covers
for floor, for pedestrian traffic,
for boxes in aluminium alloy
P55

For boxes with dimensions (mm)	External dimensions (mm)	Palazzoli code	Pack Q.ty
125x125x63	145x145x15	519210	1
155x155x63	177x177x16,5	529210	1
185x185x95	207x207x16,5	519310	1
220x220x95	245x245x20	529310	1
295x295x105	325x325x22	529410	1
373x373x140	405x405x25	519610	1

Equipment included: complete with non-ageing gasket and captive stainless steel fixing screws.



Blind flanges
flat, in steel
for windowed walls
IP67

For windows	Projection (mm)	Palazzoli code	Pack Q.ty
F0 (insulating mat.)	5	540030	1
F1 (insulating mat.)	6	540031	5
F0	2,5	540090	5
F1	5,5	540091	5
F2	5,5	540032	1
F3	6	540033	2
F4	6	540034	2
F5	7	540035	2
F6	8	540036	1

Uses: for closing unused windows. Holes can be made for applying cable glands.



Blind flanges
raised, in aluminium alloy
for windowed walls
IP67

For windows	Projection (mm)	Palazzoli code	Pack Q.ty
F1	32	540061	1
F2	32	540062	1
F3	50	540063	1
F4	50	540064	1
F5	80	540065	1
F6	80	540066	1

Uses: for closing unused windows. Make wiring easier as they increase the internal volume of the enclosure.



Flanges
flat, in aluminium alloy
with **metric threading**
for windowed walls
IP67

For windows	Threading type	Projection (mm)	Palazzoli code	Pack Q.ty
F0	M25	18	541050	1
F1	M25	18	541055	1
F1	M32	51	540180	1
F2	M32	51	540185	1
F2	M40	51	540186	1
F3	M40	51	540190	1
F4	M40	51	540193	1
F5	M50	51	540195	1

Technical accessories:



Flanges
raised, in aluminium alloy
with **gas threading**
and **cable gland**
for windowed walls
IP67

For windows	Threading type	Entry cable diameter (mm)	Projection (mm)	Palazzoli code	Pack Q.ty
FO (insulating mat.)	1/2"	9÷12	23	541010	1
FO (insulating mat.)	3/4"	14÷16	29	541020	1
F0	1/2"	9÷12	31	541080	1
F0	3/4"	14÷16	33	541090	1
F0	1"	17÷20	34	541030	1
F1	1/2"	9÷12	29	541011	1
F1	3/4"	14÷16	33	541021	1
F1	1"	16÷22	63	540151	1
F1	1" 1/4	25÷26	63	540141	1
F2	1"	16÷22	63	540152	1
F2	1" 1/4	25÷26	64	540142	1
F3	1" 1/2	34÷35	82	540153	1
F4	1" 1/2	25÷35	88	540154	1
F5	2"	33÷44	124	540145	1
F6	2" 3/4	63÷64	154	540156	1

Uses: suitable for entry with threaded conduits. Make wiring easier as they increase the internal volume of the enclosure.



Flanges
raised, in aluminium alloy
with **double gas threading**
and **cable gland**
for windowed walls
IP67

For windows	Threading type	Entry cable diameter (mm)	Projection (mm)	Palazzoli code	Pack Q.ty
F0	1/2"	9÷12	36	541040	1
F1	3/4"	12÷16	57	540161	1
F2	1"	16÷22	62	540162	1
F3	1" 1/4	25÷26	79	540163	1
F4	1" 1/2	25÷35	124	540164	1
F5	2"	33÷44	154	540165	1

Uses: suitable for entry with threaded conduits.



One way junction
in aluminium alloy
for windowed walls

For windows	Projection (mm)	For cables ø (mm)	Palazzoli code	Pack Q.ty
F1	70	26	544031	1
F2	90	26	544022	1
F3	110	42	544033	1
F4	140	54	544034	1
F5	160	65	544035	1
F6	250	80	544036	1

Uses: suitable for entry with unthreaded conduits or cables.



One way junction 90° angled, in aluminium alloy
for windowed walls

For windows	Projection (mm)	Internal hole ø (mm)	Palazzoli code	Pack Q.ty
F1	53	32	545081	1
F2	74	32	545082	1
F3	83	54	545083	1
F4	93	60	545084	1
F5	137	65	545085	1
F6	137	65	545086	1

Uses: suitable for entry with unthreaded conduits or cables.



Supports
for wall mounting at 90°
of straight sockets and plugs
IP65

Support base dimensions (mm)	Installable inlets/outlets	Box window	Palazzoli code	Pack Q.ty
200x133	63A	F5	472947	1
200x133	125A	F5	472948	1

Equipment included: 4 x stainless steel screws for fixing inlet or outlet.

Technical accessories:



Reducers in steel
for windows
IP67

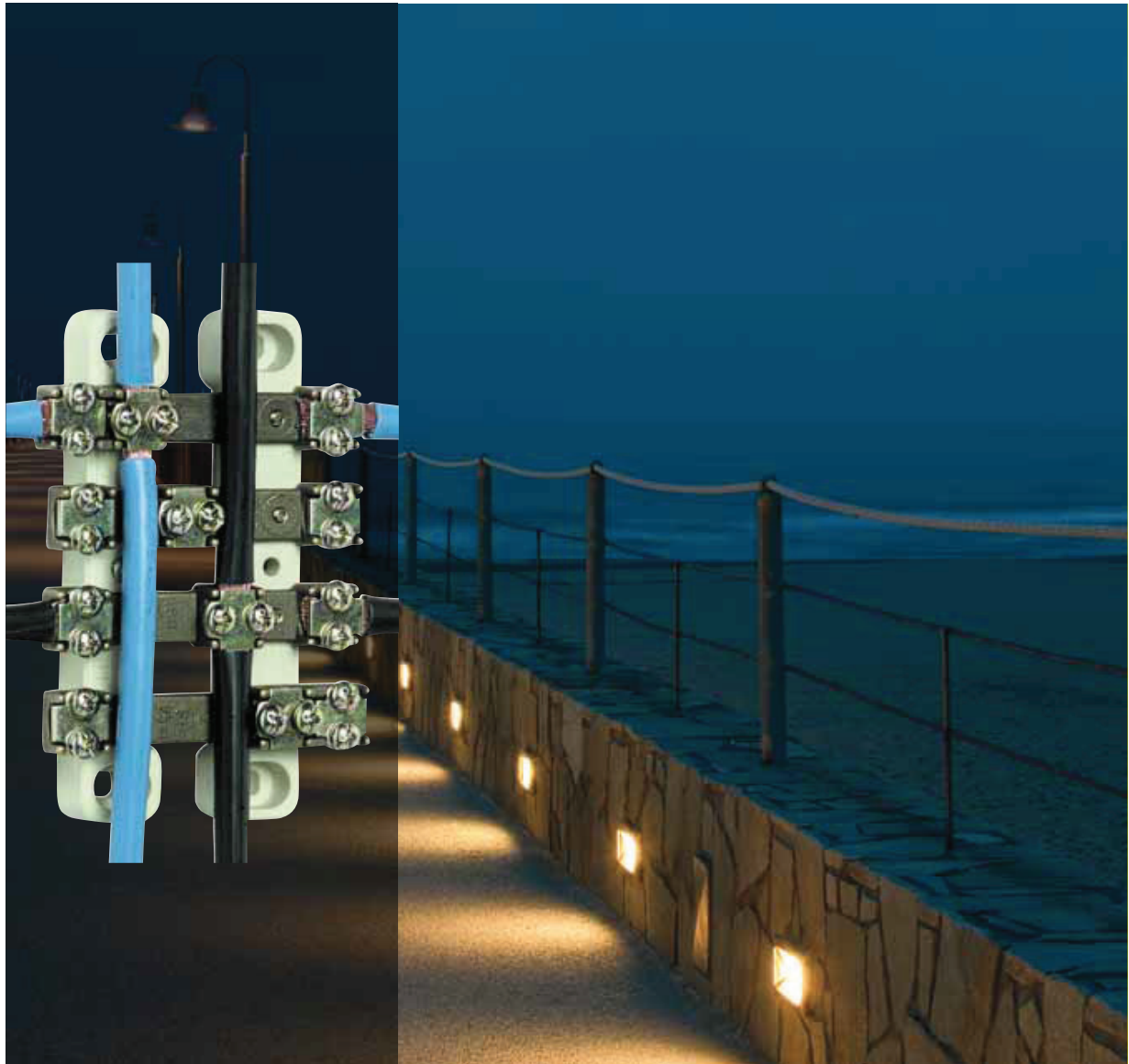
Shape	From window	To window	Thickness (mm)	Palazzoli code	Pack Q.ty
	F1	F0	3	547010	1
	F2	F0	4	547020	1
	F2	F1	4	547021	1
	F3	F0	4	547030	1
	F3	F1	4	547031	1
	F3	F2	4	547032	1
	F3	2xF0	5	547300	1
	F4	F1	4	547041	1
	F4	F2	4	547042	1
	F4	F3	4	547043	1
	F4	F1+F0	6	547410	1
	F4	2xF1	5	547411	1
	F5	F3	5	547053	1
	F5	F4	5	547054	1
	F6	F3	5	547063	1
	F6	F4	5	547064	1
	F6	F5	5	547065	1
	F5	F1	5	547151	1
	F5	F2	5	547152	1
	F6	F1	5	547161	1
	F6	F2	5	547162	1

Uses: boxes and socket-outlets can be interfaced with different windows.

Characteristics: codes 547151, 547152, 547161, 547162 are needed to couple only the boxes with the flanges with cable gland.

Technical accessories:

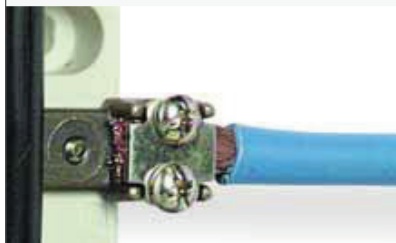




CONTACT series terminal blocks allows the realization of electrical connections of high quality with copper conductors without any particular preparation (with cable terminals or connectors). The offer is composed of boxes for single-pole, multi-pole and multi-pole for high power, that can be inserted inside boxes of TAIS and ALUPRES series. The range of entry cable sections is between 4mm² and 300mm².

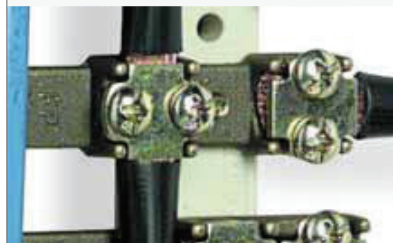
GUARANTEED FASTENING

Thanks to the "cage" terminals with two-screw fastening



ELECTRICAL SECURITY

The central terminals allows to obtain connection from main lines without having to cut the cable



EASY INSTALLATION

Special housings on insulating supports enable rapid fixing to any plate type





Conformity to standards	IEC/EN 60947-7-1
Material	Ceramic (supports) Brass (contacts)
Rated impulse seal voltage	6kV
Storage temperature	-80°C - +100°C
Operating temperature	-80°C - +100°C



Technical data of terminal blocks with flat terminals:

Rated section (mm ²)	Rated current (A)	Entry cable sections (mm ²)	Tightening torque (Nm)
16	76	6 - 16	0,8
25	101	10 - 25	1,2
35	125	16 - 35	1,2
70	192	50 - 70	2
120	269	95 - 120	2,5
240	415	150 - 240	6
300	520	240 - 300	6

Technical data of terminal blocks on metallic bar:

Rated section (mm ²)	Rated current (A)	Entry cable sections (mm ²)	Tightening torque (Nm)
6	41	1,5 - 6	0,8
16	76	4 - 16	1,2

Technical data of terminal blocks with mantle terminals:

Rated section (mm ²)	Rated current (A)	Entry cable sections (mm ²)	Tightening torque (Nm)
16	76	4 - 16	2,5



Terminal blocks
with flat terminals
for back plates
500V

Box min. dimensions (mm)	N. poles for section	Palazzoli code	Pack Q.ty
92x92	3x16 mm ²	159030	1
125x125	4x16 mm ²	159040	10
	3x25 mm ²	159032	1
155x155	4x25 mm ²	159042	5
	3x35 mm ²	159033	5
185x185	4x35 mm ²	159043	1
	3x70 mm ²	159034	1
220x220	4x70 mm ²	159044	1
	3x120 mm ²	159035	1
295x295	4x120 mm ²	159045	1
	3x240 mm ²	159036	1
373x373	4x240 mm ²	159046	1
	3x300 mm ²	159037	1



Terminal blocks
in ceramic
on metallic bar
400V

For boxes with dimensions (mm)	N. poles for section	Palazzoli code	Pack Q.ty
92x92	4x6 mm ²	532725	1
	4x6 mm ²	532735	1
	6x4 mm ²	532755	1
92x125, 92x185 125x125, 125x185	4x6 mm ²	532745	1
	4x16 mm ²	532747	1
	6x6 mm ²	532765	1
125x250	4x16 mm ²	532748	1
	6x16 mm ²	532768	1

Characteristics: codes 532735 and 532755 in insulating material.



Terminal blocks
with mantle terminals
for boxes
400V

For boxes with dimensions (mm)	N. poles for section	Palazzoli code	Pack Q.ty
92x92	4x16 mm ²	113194	1

Technical accessories:





Conformity to standards	IEC/EN 60423 IEC/EN 50262
Material	Polyamide (version in insulating material) Nickel plated brass (version in brass) Neoprene (gasket) Zinc plated steel (adaptors)
Protection rating (IP as per IEC/EN 60529)	IP67 - IP68
Colour	RAL7035 (technopolymer)
Operating temperature (insulating material)	-30°C - +120°C
Operating temperature (brass)	-40°C - +100°C



Adaptors Pg/Metric
in insulating material
for conduit/box coupling
IP67

Male thread	Female thread	Palazzoli code	Pack Q.ty
Pg13,5	M20x1,5	580291	1
Pg16	M20x1,5	580292	1
Pg21	M25x1,5	580294	1
Pg29	M32x1,5	580295	1
Pg36	M40x1,5	580296	1

Equipment included: complete with gasket.



Adaptors Gas/Metric
in insulating material
for conduit/box coupling
IP67

Male thread	Female thread	Palazzoli code	Pack Q.ty
Pg13,5	3/8"	580271	1
Pg16	1/2"	580272	1
Pg21	3/4"	580274	1
Pg29	1"	580275	1
Pg36	1" 1/2	580276	1

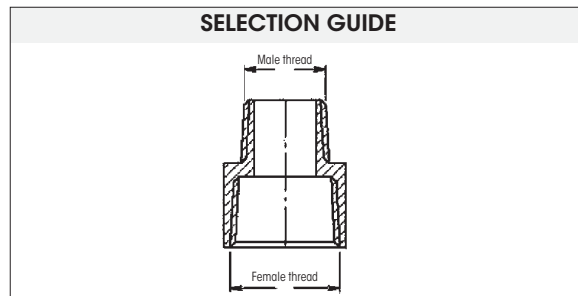
Equipment included: complete with gasket.



Adaptors Gas/Metric
in insulating material
for conduit/box coupling
IP67

Male thread	Female thread	Palazzoli code	Pack Q.ty
1/2" Gas	M20x1,5	580261	1
3/4" Gas	M25x1,5	580264	1

Equipment included: complete with gasket.





Cable glands
in insulating material
with **metric** threading
IP68

Thread	Mounting hole (mm)	Fastening diameter (mm)	Thread length (mm)	Palazzoli code	Pack Q.ty
M12x1,5	12,5	2,5-6,5	8	581012	100
M16x1,5	16,5	3,5-10	10	581016	50
M20x1,5	20,5	7-14	10	581020	50
M25x1,5	25,5	9-18	10	581025	25
M32x1,5	32,5	14-25	10	581032	20
M40x1,5	40,5	18-32	10	581040	10
M50x1,5	50,5	24-38,5	12	581050	5
M63x1,5	63,5	35-48	12	581063	5



Cable glands
in insulating material
with **metric** threading
with **long thread**
IP68

Thread	Mounting hole (mm)	Fastening diameter (mm)	Thread length (mm)	Palazzoli code	Pack Q.ty
M12x1,5	12,5	2,5-6,5	8	581112	100
M16x1,5	16,5	3,5-10	10	581116	50
M20x1,5	20,5	7-14	10	581120	50
M25x1,5	25,5	9-18	10	581125	25
M32x1,5	32,5	14-25	10	581132	20
M40x1,5	40,5	18-32	10	581140	10
M50x1,5	50,5	24-38,5	12	581150	5
M63x1,5	63,5	35-48	12	581163	5

Uses: for cable/conduit entry into boxes with very thick walls.



Locknuts
in insulating material
with **metric** threading

Thread	Palazzoli code	Pack Q.ty
M12x1,5	581212	50
M16x1,5	581216	50
M20x1,5	581220	50
M25x1,5	581225	50
M32x1,5	581232	50
M40x1,5	581240	20
M50x1,5	581250	10
M63x1,5	581263	5



Cable glands
in insulating material
with **Pg** threading
IP68

Thread	Mounting hole (mm)	Fastening diameter (mm)	Thread length (mm)	Palazzoli code	Pack Q.ty
Pg7	13	2,5-6,5	8	571007	100
Pg9	16	2,5-8	8	571009	50
Pg11	19	3,5-10	8	571011	50
Pg13,5	21	5-12	9	571013	50
Pg16	23	7-14	10	571016	50
Pg21	29	9-18	11	571021	25
Pg29	38	14-25	11	571029	20
Pg36	48	18-32	13	571036	10
Pg42	55	24-38,5	13	571042	5
Pg48	61	35-48	14	571048	5



Screwcaps
in insulating material
with **Pg** threading

Thread	Palazzoli code	Pack Q.ty
Pg13,5	580230	100
Pg16	580231	100
Pg21	580232	100
Pg29	580233	50
Pg36	580234	25



Cable glands
in insulating material
with **Pg** threading
with **long thread**
IP68

Thread	Mounting hole (mm)	Fastening diameter (mm)	Thread length (mm)	Palazzoli code	Pack Q.ty
Pg7	13	3-6	15	571107	50
Pg9	16	5-8	15	571109	50
Pg11	19	6-10	15	571111	50
Pg13,5	21	8-12	15	571113	50
Pg16	23	10-14	15	571116	50
Pg21	29	11,5-18	15	571121	20
Pg29	38	15-24	15	571129	20
Pg36	48	24-34	18	571136	10
Pg42	55	34-42	18	571142	10
Pg48	61	40-48	18	571148	10



Locknuts
in insulating material
with **Pg** threading

Thread	Palazzoli code	Pack Q.ty
Pg7	571207	50
Pg9	571209	50
Pg11	571211	50
Pg13,5	571213	50
Pg16	571216	50
Pg21	571221	25
Pg29	571229	20
Pg36	571236	10
Pg42	571242	5
Pg48	571248	5

**Cable glands**
in nickel plated brass
with **metric** threading
IP68

Thread	Mounting hole (mm)	Fastening diameter (mm)	Thread length (mm)	Palazzoli code	Pack Q.ty
M12x1,5	12,5	2,5-6,5	6,5	582012	100
M16x1,5	16,5	4-9,5	7	582016	50
M20x1,5	20,5	7-13	8	582020	50
M25x1,5	25,5	8-16	8	582025	25
M32x1,5	32,5	11-21	9	582032	20
M40x1,5	40,5	15-27	9	582041	10
M50x1,5	50,5	22-35	10	582050	5
M63x1,5	63,5	35-48	10	582063	5

**Screwcaps**
in nickel plated brass
with **metric** threading
IP68

Thread	Thread length (mm)	Palazzoli code	Pack Q.ty
M12x1,5	5	582312	100
M16x1,5	6	582316	100
M20x1,5	6,5	582320	100
M25x1,5	7	582325	100
M32x1,5	8	582332	50
M40x1,5	9	582340	50
M50x1,5	10	582350	25
M63x1,5	10	582363	25

**Cable glands**
in nickel plated brass
with **metric** threading
with **long thread**
IP68

Thread	Mounting hole (mm)	Fastening diameter (mm)	Thread length (mm)	Palazzoli code	Pack Q.ty
M12x1,5	12,5	2,5-6,5	15	582112	100
M16x1,5	16,5	4-9,5	15	582116	50
M20x1,5	20,5	7-13	15	582120	50
M25x1,5	25,5	8-16	15	582125	25
M32x1,5	32,5	11-21	15	582132	20
M40x1,5	40,5	15-27	15	582141	10
M50x1,5	50,5	22-35	15	582150	5
M63x1,5	63,5	35-48	15	582163	5

**Locknuts**
in nickel plated brass
with **metric** threading

Thread	Palazzoli code	Pack Q.ty
M12x1,5	582212	50
M16x1,5	582216	50
M20x1,5	582220	50
M25x1,5	582225	25
M32x1,5	582232	20
M40x1,5	582240	10
M50x1,5	582250	10
M63x1,5	582263	5

**Cable glands**
in nickel plated brass
with **Pg** threading
IP68

Thread	Mounting hole (mm)	Fastening diameter (mm)	Thread length (mm)	Palazzoli code	Pack Q.ty
Pg7	13	2,5-6,5	5	572007	50
Pg9	15,5	4-9,5	6	572009	50
Pg11	19	6-11,5	6	572011	50
Pg13,5	21	7-13	6,5	572013	50
Pg16	23	8-15	6,5	572016	50
Pg21	29	11-19	7	572021	20
Pg29	37,5	16-26	8	572029	20
Pg36	47,5	22-34,5	9	572036	10
Pg42	54,5	27-40	10	572042	5

**Cable glands**
in nickel plated brass
with **Pg** threading
with **long thread**
IP68

Thread	Mounting hole (mm)	Fastening diameter (mm)	Thread length (mm)	Palazzoli code	Pack Q.ty
Pg7	13	2,5-6,5	12	572107	50
Pg9	15,5	4-9,5	12	572109	50
Pg11	19	6-11,5	12	572111	50
Pg13,5	21	7-13	12	572113	50
Pg16	23	8-15	12	572116	50
Pg21	29	11-19	12	572121	20
Pg29	37,5	16-26	15	572129	20
Pg36	47,5	22-34,5	15	572136	10
Pg42	54,5	27-40	15	572142	5
Pg48	60	35-48	15	572148	5

**Screwcaps**
in nickel plated brass,
with **Pg** threading
IP68

Thread	Thread length (mm)	Palazzoli code	Pack Q.ty
Pg7	5	572307	50
Pg9	6	572309	50
Pg11	6	572311	50
Pg13,5	6,5	572313	50
Pg16	6,5	572316	25
Pg21	7	572321	20
Pg29	8	572329	15
Pg36	9	572336	10
Pg42	10	572342	10
Pg48	10	572348	10

**Locknuts**
in nickel plated brass,
with **Pg** threading

Thread	Palazzoli code	Pack Q.ty
Pg7	572207	50
Pg9	572209	50
Pg11	572211	50
Pg13,5	572213	50
Pg16	572216	50
Pg21	572221	20
Pg29	572229	20
Pg36	572236	10
Pg42	572242	5
Pg48	572248	5

**Screwcaps**
with **anti-condensation** filter
with **Pg** threading
IP54

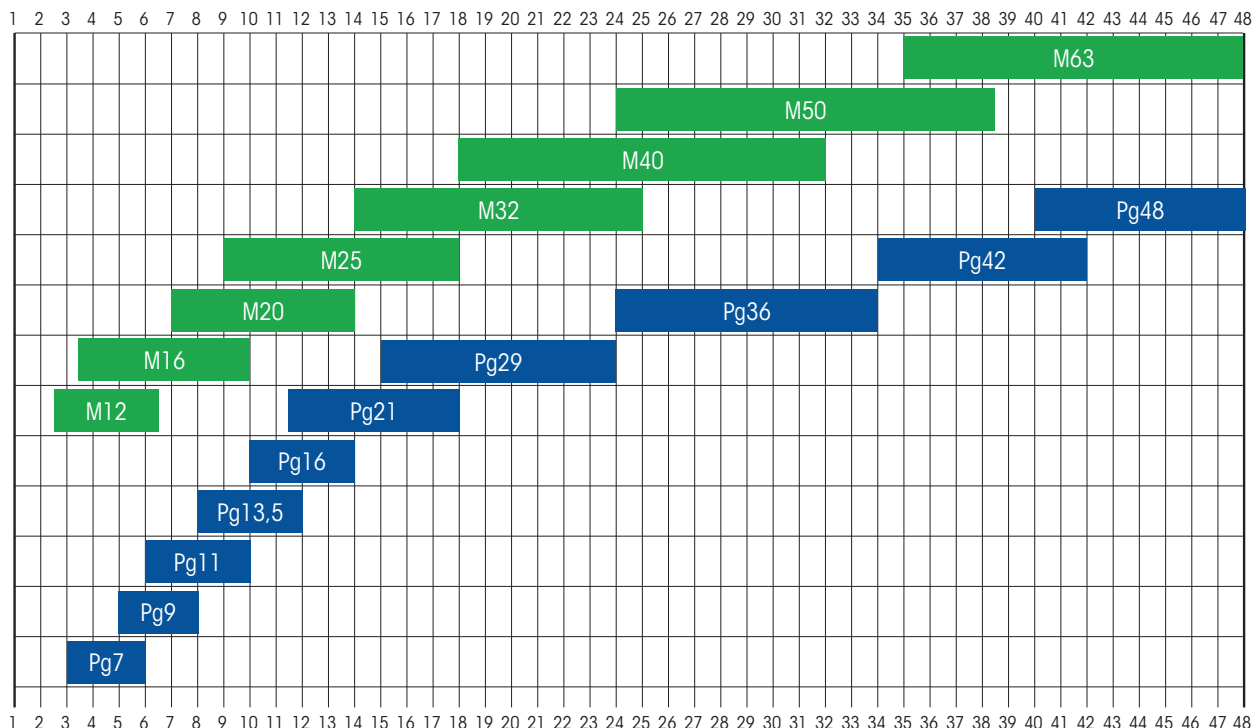
Thread	Mounting hole (mm)	Palazzoli code	Pack Q.ty
Pg16	23	580211	1
Pg21	29	580212	1
Pg29	38	580213	1

Equipment included: inclusive of threaded shade ring, stainless steel sponge filter, gasket and nut.**Characteristics:** the cap must be mounted with the opening aiming downwards.**Uses:** ideal for very humid environments.



Table for selecting cable glands with metric and Pg threading

FASTENING DIAMETERS (MM) - INSULATING MATERIAL



Notes: the fastening diameters for Pg cable glands in insulating material refers to the version with long thread.

FASTENING DIAMETERS (MM) - BRASS

